

CVe LIVE®

For real-time monitoring of tools, AST provides hardware and website access for OEMs and molders utilizing the CVe Monitors.

Features:

- Utilizes FCC and CE certified internal components.
- Press Modules act as a node on a network, reducing the distance required in the plant for data submission to the Gateway.
- Radio Frequency (RF) antennas are interference-free in typical molding environments.
- Designated website for data collection, reporting, and file storage.



Press Module

- 1 per press connects to the CVe Monitor via cables
- Power supply (US/International) included
- Sends data to the Gateway continuously
- Serves as a node on the network for tools running with a CVe Monitor

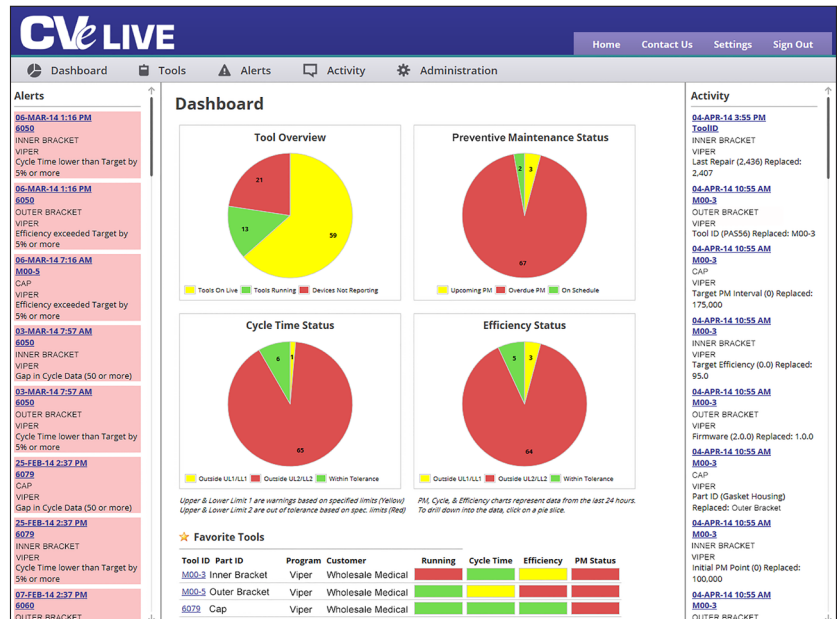


Gateway

- 1 per facility collects data from all press modules installed via RF transmissions
- Power supply (US/International) and CAT5 Ethernet cable included
- Accesses the internet, and AST technicians will work with the IT departments for installation
- Sends data to the website every 15 minutes

CVe Live Website Features:

- Secure access for OEMs and molders, set up at the time of installation of the CVe Live hardware.
- The dashboard gives information at a glance and allows for drill down into specifics on each tool.
- Users can mark favorites and also save searches for monitoring specific programs or suppliers.
- Graphs for cycle times, efficiencies, cavitation and production loss, and also preventive maintenance, can be shown and saved.
- PM Function allows for user-defined PM stops (Incremental or Absolute). The user can also create or customize PM forms and checklists for a specific maintenance program.
- Asset Tracking shows where and when the CVe Monitor was last tethered to a CVe Live network.
- Molding data and tool information can be exported to Excel, allowing for easy import into existing systems.
- Administration and security levels are controlled by the user, and access can be given to subcontractors to upload information or to initialize the CVe Monitors to begin submitting data.
- The file cabinet system is designed to store reports, tool and part drawings, and set-up sheets and can be utilized by customers with the CVe Live system installed, or by those using OnDemand who are looking to have or give global access to tool information.



For a CVe Live installation or for CVe Live website access, contact your account manager, Customer Service, or email AST directly at orderdesk@ASTtech.com.