

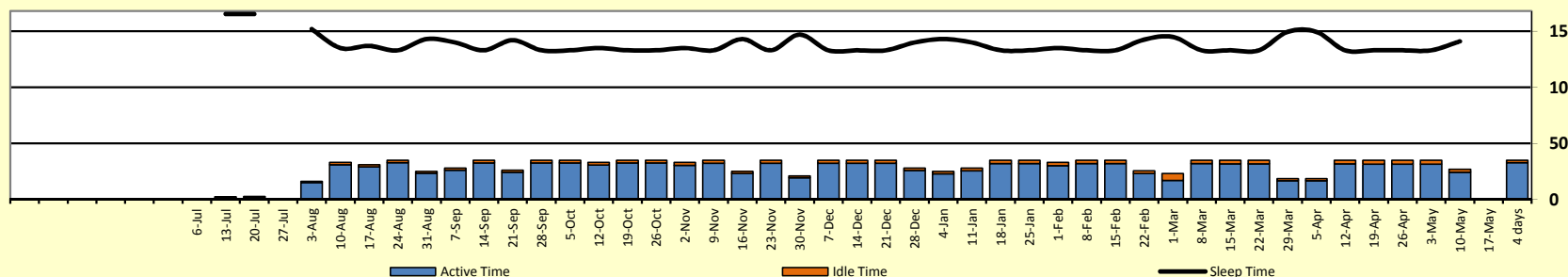
Mold ID: 8565B

Part Name: Blower Housing ABT57

Program Name: Green

94% Target Activity %	7.5 Target Cycle Time	Legend Within Target 2% Between 2%-5% Outside Target 5%	Life-To-Date Cycles	507,288	Cycles since last	PM	24,721	
83% Since Last Report Activity %	6.8 Since Last Report Cycle Time		Hours Idle	111	Repair	16,014		
94% Last Full Week Activity %	7.4 Last Full Week Cycle Time		Hours in Sleep Mode	6,287	Part Revision	Never		
92% Life-To-Date Activity %	8.5 Life-To-Date Cycle Time		Hours in Active Mode	1,197	General Query	0	Report	278

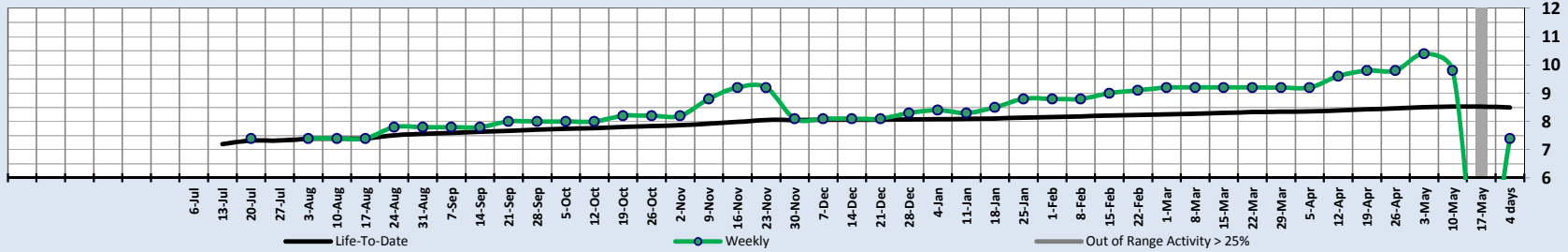
Productivity



Hours

Active Time is the accumulation of all time the monitor is cycling. Idle time begins after 200 seconds of inactivity. Once Idle Time counts to 6 hours the time is transferred to Sleep Time and continues to accumulate until monitor is cycled.

Cycle Time



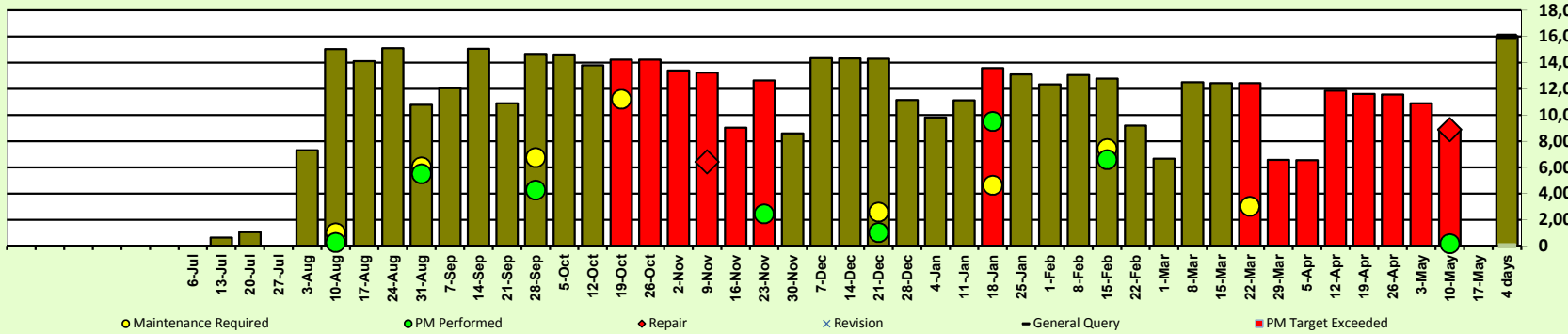
Seconds

Cycle Time= Active Time/ Total Cycles

Activity

Initial PM Point: 10,000 Cycles-Target
 9,265 Cycles-Actual
 Target PM Interval: 50,000 Cycles
 Cycles until PM: 25,279 Cycles

Cycles



Total Cycles per Week

OnDemand Activity Log [Software Version 1.7.1/1.9.2/1.6]

CVe Initialize Date	July 10, 2013	May 5, 2012
Device ID	MGZ0011	MGZ0011
Mold #	8565B	8565B
	Blower	Blower
	Housing	Housing
Part Name	ABT57	ABT57
Program Name	Green	Green
Customer	Crimson Fan	Crimson Fan
Target Activity %	N/A	94%
Target Cycle Time	N/A	7.5
Initial PM Point	50000	50000
Target PM Interval	100000	100000
Cycles Prior to CVe Installation*	0	0

Reason for connecting CVe Monitor

Date/Time	Battery	Cycles	OD User	Conn. By	Company	Destination	REV	PM	REP	GEN	REV#	Notes
May 21, 2013	87	507,288	INJECT1	Blake Fitz	Injection Tech	CrimsonQ@crmn.com	N	N	N	Y	N/A	END: Tesing new Cycle (QR#7)
May 21, 2013	87	506,524	INJECT1	Blake Fitz	Injection Tech	CrimsonQ@crmn.com	N	N	N	Y	N/A	START: Testing new Cycle (QR#7)
May 6, 2013	87	491,274	INJECT1	Blake Fitz	Injection Tech	CrimsonQ@crmn.com	N	N	Y	N	N/A	Pulled from production for mold operational issues. It is being sent for evaluation and rework
May 2, 2013	87	482,567	MOLDHOU1	Chuck Louse	Mold House	CrimsonQ@crmn.com	N	Y	N	N	N/A	Full PM: Cavity #2 was shutoff
February 12, 2013	88	364,001	MOLDHOU1	Chuck Louse	Mold House	CrimsonQ@crmn.com	N	Y	N	N	N/A	Full PM
January 15, 2013	89	314,856	MOLDHOU1	Chuck Louse	Mold House	CrimsonQ@crmn.com	N	Y	N	N	N/A	Full PM
December 13, 2012	91	260,002	MOLDHOU1	Chuck Louse	Mold House	CrimsonQ@crmn.com	N	Y	N	N	N/A	Full PM: Cavity #2 was shutoff
November 19, 2012	93	211,563	MOLDHOU1	Chuck Louse	Mold House	CrimsonQ@crmn.com	N	Y	N	N	N/A	Full PM
November 6, 2012	95	193,268	INJECT1	Blake Fitz	Injection Tech	CrimsonQ@crmn.com	N	N	Y	N	N/A	3 cavities are shutdown. Pulled for evaluation and repair
September 24, 2012	97	106,235	MOLDHOU1	Chuck Louse	Mold House	CrimsonQ@crmn.com	N	Y	N	N	N/A	Full PM
August 27, 2012	98	58,725	MOLDHOU1	Chuck Louse	Mold House	CrimsonQ@crmn.com	N	Y	N	N	N/A	Full PM
August 3, 2012	99	9,265	MOLDHOU1	Chuck Louse	Mold House	CrimsonQ@crmn.com	N	Y	N	N	N/A	Initial mold inspection. There is no wear or damage to mold following initial run. Targets are set. Mold is released for production
July 10, 2012	99	0	MOLDHOU1	Chuck Louse	Mold House	CrimsonQ@crmn.com	N	N	N	Y	N/A	Mold is completed and released for sampling